



Vulnerability Knowledge
& Practice Programme

Post Implementation; England's Local Child Safeguarding Arrangements

Lorraine Parker Policing Facilitator Child Safeguarding Reforms
Vulnerability Knowledge and Practice Programme
Supported by the Home Office

June 2022 briefing



Local Child Safeguarding Arrangements (England)



Working Together Statutory Guidance 2018;

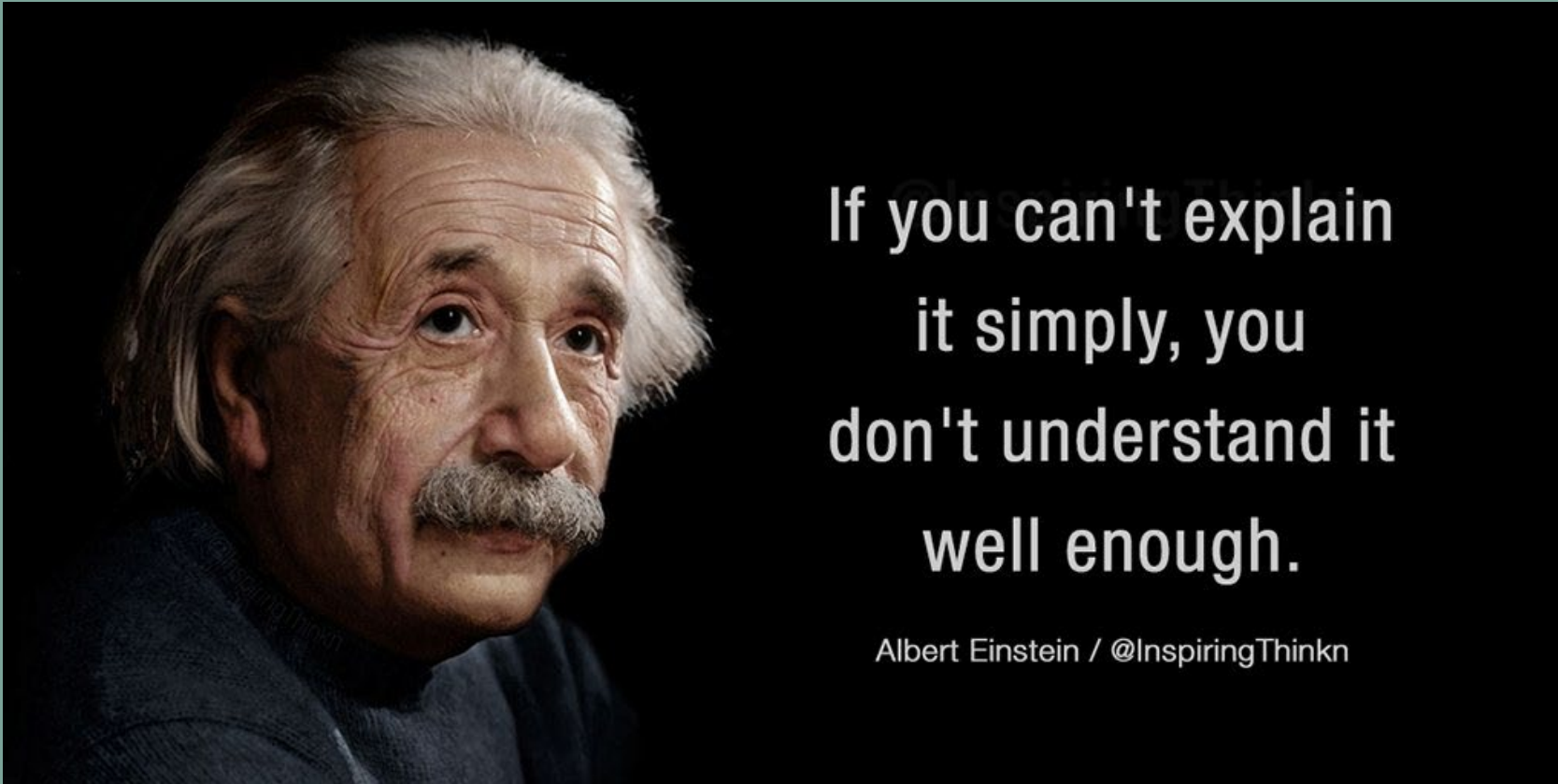
Should be complied with unless exceptional circumstances arise

Is intentionally permissive

Applies to all organisations and agencies who have functions relating to children but in particular to Chief Executives of Local Authorities, Chief Officers of Police, Accountable Officers of Clinical Commissioning Groups and their delegates as the Safeguarding Partners

Focuses on the core legal requirements, making it clear what individuals, organisations and agencies must and should do to keep children safe. In doing so, it seeks to emphasise that effective safeguarding is achieved by putting children at the centre of the system and by every individual and agency playing their full part.

Will be subject to a consulted re-write 2022-2023 and potential for legislative changes as well



*You're being asked to address persistent, stubborn, repetitive issues across the whole system. This is not about themes of harm. This **is about inter-action of the sub system***



Vulnerability Knowledge
& Practice Programme



National System (subject to review)

- **Safeguarding Reform Implementation Board (SCRIB)**
 - Deputy Directors HO/DfE/DHSC chair SCRIB, includes senior agency representation and other stakeholders
- **Operational group led by senior department civil servants HO/DfE/DHSC with agency facilitators**
- **Weekly operational facilitators work group**
- **Task groups working with the delivery plan including; Independent Scrutiny, leadership including funding and CPD, Evaluations/outcomes.**
- **Monthly briefs with cross government departments**
- **Police Stakeholder Reference Group**

SCRIB

(bi-monthly
under review)



Ops Group
(monthly)



Task & finish
Groups

Stakeholders:

Local Child Safeguarding Partnerships –Police leads.
ADCS / NHS / The Association of Safeguarding Partners
Safeguarding Children Practice Review Panel
What Works Centres
Inspectorates
Elected members, Mayoral/OPCC
Academic partners

National System

[Child Safeguarding Practice Review Panel](#)

[Joint targeted area inspection: the multi-agency response to identification of initial need and risk - GOV.UK \(www.gov.uk\)](#)

[About - What Works for Children's Social Care \(whatworks-csc.org.uk\)](#)

What about;

[VVC intervention evaluations | What Works Centre for Crime Reduction \(college.police.uk\)](#)

[NICE | The National Institute for Health and Care Excellence](#)

Relevant workstreams and reports

Independent review of children's social care (Josh McAllister's review) Read the full report here; <https://childrensocialcare.independent-review.uk/wp-content/uploads/2022/05/The-independent-review-of-childrens-social-care-Final-report.pdf> remember 1

National learning reviews following the deaths of Arthur Labinjo-Hughes and Star Hobson [National review into the murders of Arthur Labinjo-Hughes and Star Hobson - GOV.UK \(www.gov.uk\)](#)

Local Safeguarding Children Practice Review Hackney Read the report here; [Child-Q-PUBLISHED-14-March-22.pdf \(chscp.org.uk\)](#)

JTAI programme initiated, Joint targeted area inspection of the multi-agency response to identification of initial need and risk - GOV.UK ([www.gov.uk](#)) up to 12 JTAs to take place 2022-23.

[Joint targeted area inspection \(JTAI\) of Solihull published - GOV.UK \(www.gov.uk\)](#)

JTAI yet to publish; Maidenhead and Winsor (TVP) and Barnsley (SYP)

National Probation Service temporarily suspended involvement in JTAs

Relevant workstreams and reports

NPCC MASH national work lead ACC Rachel Jones (Metropolitan Police MASH review led by commander Kevin Southworth)

VKPP led Independent Scrutiny Project reporting July 2022

DHSC Evaluation of safeguarding children arrangements project to be awarded August 2022 [Policy Research Programme - Evaluation of the multi-agency child safeguarding reforms | NIHR](#)

NHS England & Improvement National Safeguarding team and Facilitator working on governance structures for the emerging Integrated care boards and partnerships

Consulted revision of Working Together 2018 announced pre-National panel and Josh McAllister reviews. Dependent upon adoption of certain recommendations this may require legislative amendments

VKPP production of Senior Leaders Resource “System’s Leadership in your Local Safeguarding Children Arrangements” October 2022

Quality of Reviews; Early stages led by VKPP DR Andrea Darling, includes involvement in the new Review Officers training by CoP

Peer support provision to Police Leaders from Policing facilitator

Peer review VKPP

Leadership and delegation

Gap; Inconsistent understanding and application of the enhanced safeguarding partner role, in particular delegation, accountability and funding

Desired outcome; Systematic development of cross agency leaders about their enhanced child safeguarding responsibilities to enable them to make decisions and take action that transfers the intent of WT18 into practice



Independent Scrutiny

- **Gap;** A deficit in independent scrutiny of the impact on practice of the collective decisions and actions of the three formal safeguarding partners
- **Desired outcome;** Evidence of real scrutiny and independent challenge to the work of the safeguarding partners with the focus on the impact of outcomes for children

Local Safeguarding Children Partnerships Independent Scrutiny: 7 Minute Briefing

For further information please contact:
Lorraine.PARKER@suffolk.police.uk
iona.STRATTON@suffolk.police.uk

1

Project Aims
This project aims to share knowledge across the Safeguarding Children Sector about what is being scrutinised and how. It follows interest in this topic identified by [The Wood Review](#), and initially explored in the [TASP Review](#).

2

3

Methods
Work will include analysis of a survey/case study hybrid via SmartSurvey followed by webinar activity and semi structured interview with relevant local safeguarding practitioners. Initially we will consult colleagues to create a template for safeguarding partners to describe examples of what is scrutinised and how.

Data will be thematically analysed to identify principles of promising practice. Methods for scrutiny will be analysed against the Six Steps for Independent Scrutiny. Where concerns are noted by the research team, these will be brought to the attention of Prof Jenny Pearce for discussion. If Professor Pearce feels it is necessary and the practice is indeed concerning, she along with Lorraine Parker of the VKPP will approach and feedback the concerns to Local Safeguarding Partnership leads.

4

5

Timeline

OCT-NOV 2021	JAN-FEB 2022	MAR 2022
Survey sent out to Business Managers & Independent Scrutineers to complete.	Analysis of data using Six Step Principles . Webinar/ interviews to further explore emerging themes.	Completion of research. Go-live event.
SEPT 2021 Design a survey/case study template. To gain ethical approval.	17TH DEC 2021 Deadline for survey to be completed.	FEB-MAR 2022 Writing report into findings of research. Selection of case studies & seeking consent for use.

6

6

Ethics
Ethical approval has been granted. Further input into ethical considerations will be overseen by The Institute of Applied Social Research, University of Bedfordshire. Participation is voluntary and can withdraw at any point throughout the project.

7

6

Planned Outputs

- Report on findings, with executive summary.
- Resource 'bank' of Case study examples of undertaking Independent Scrutiny.
- Revised version of the "Six Steps" for undertaking Independent Scrutiny.
- Briefing paper identifying areas for future research and enquiry.
- A workshop to disseminate the learning.

7

2

Who We Are & Governance
This is a small multi-agency project lasting from October 2021 to March 2022, hosted by the VKPP (Lead Lorraine Parker). The Home Office are supporting a part time research assistant (Iona Stratton) and part time project manager (Dr Debra Allnock).

The work is developed in collaboration with The Association of Safeguarding Partners (TASP) & University of Bedfordshire, Safer Young Lives Research Centre (via Prof Jenny Pearce). A multi-agency stakeholder reference group will oversee the work.

4

3

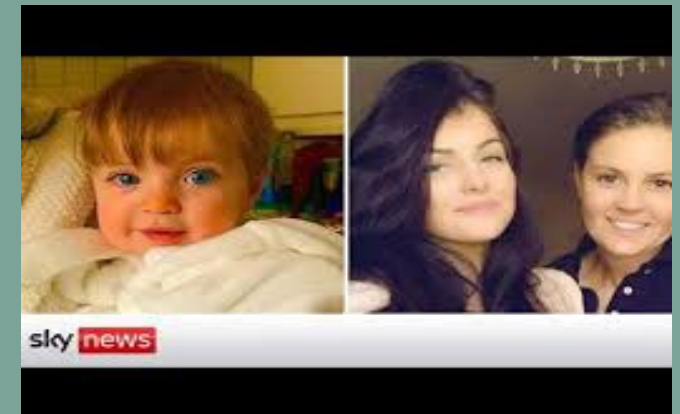
Research Questions
The key research questions are:

- What do we scrutinise of LSCP arrangements and how?
- Are there existing tools, frameworks/ approaches to scrutiny that can be shared across the sector?
- What are the opportunities and challenges that scrutiny has engaged with to date?
- Are there recommendations from scrutineers and partnerships for future work on IS?

4

Quality of Learning

- Local reviews remain slow to be published, continue to focus on the individual actions of children, families and practitioners rather than the persistent blockages in the local child safeguarding system
- What's the local response to outcomes of National reviews
- The role of Inspection



Quality of Learning

- [Joint targeted area inspection \(JTAI\) of Solihull published - GOV.UK \(www.gov.uk\)](https://www.gov.uk)
- [Child-Q-PUBLISHED-14-March-22.pdf \(chscp.org.uk\)](https://chscp.org.uk)
- [Microsoft Word - CROYDON SPR 'Ben' FINAL REPORT \(PUBLISHED VERSION\).docx \(croydonlcsb.org.uk\)](https://croydonlcsb.org.uk)



Relevant Agencies

- **Gap;** Education in particular, are not being sufficiently well engaged in local arrangements
- **Desired outcome;** Arrangements involve and take account of education local structure and statutory obligations reflecting the experiences and views from the broad range of schools in any area being incorporated into local planning and prioritisation
- [Review of sexual abuse in schools and colleges - GOV.UK \(www.gov.uk\)](https://www.gov.uk/government/news/review-of-sexual-abuse-in-schools-and-colleges)
- [Welcome - Everyone's Invited \(everyonesinvited.uk\)](http://everyonesinvited.uk)
- [Tackling violence against women and girls strategy: progress update - GOV.UK \(www.gov.uk\)](https://www.gov.uk/government/news/tackling-violence-against-women-and-girls-strategy-progress-update)

References

- ❖ **Wood review of local safeguarding children boards 2016;** https://assets.publishing.service.gov.uk/government/uploads/system/uploads/attachment_data/file/526329/Alan_Wood_review.pdf
- ❖ **The Children and Social Work Act 2017** cemented the review recommendations; [Children and Social Work Act 2017](#)
- ❖ **Working Together 2018;** https://assets.publishing.service.gov.uk/government/uploads/system/uploads/attachment_data/file/779401/Working_Together_to_Safeguard-Children.pdf
- ❖ **Wood Sector Expert Review of New Multi-Agency Arrangements 2021;** [Wood Review of multi-agency safeguarding arrangements \(publishing.service.gov.uk\)](#)

Reflections Independent Review Children's Social Care;

- Whilst the focus was on children's social care and we don't know which recommendations will be adopted and how they might be nuanced we've picked out some areas we think relates to local cross-agency arrangements;
- Schools should be made a statutory safeguarding partner
- Multi-agency safeguarding arrangements should be clarified to put beyond doubt their strategic role, supported by improved accountability, learning and transparency, focused on safeguarding and promoting the welfare of children, with attendance reflecting this.
- Scrutiny of how each agency is contributing to achieving these capabilities - including financial contributions - should be overseen at strategic level by more focused and accountable multi-agency safeguarding arrangements.
- As part of the National Children's Social Care Framework, the government should define outcomes, objectives, indicators of success
- Guidance and legislation on information sharing should be strengthened and local safeguarding partners should confirm they have information sharing agreements in place and have audited practice in this area.
- Where there are concerns about the functioning of partnerships, joint inspections, with a judgement attached, should be triggered.

Reflections Independent Review Children's Social Care;

- Government should set a target to achieve frictionless sharing of information between local authority and partner systems and between different local authorities by 2027.
- Partnerships should become more transparent, including publishing minutes of partnership meetings and the financial contributions of each partner.
- Working Together should be amended to set out clear joint and equal operational responsibilities for partners. The Director of Children's Services should be the primary interface between strategic and operational leaders to facilitate effective multi-agency working.
- The Safeguarding Children Reform Implementation Board should be reviewed and strengthened to take a greater leadership role in safeguarding arrangements, including requesting and publishing critical information about partnerships.
- The Child Safeguarding Practice Review Panel and relevant What Works Centres should take a more hands on role in promoting evidence and supporting partnerships to improve.
- Each agency inspectorate should review their framework to ensure there is sufficient focus on individual agency contribution

National recommendations National Panel Review

- Recommendation 1: A new expert-led, multi-agency model for child protection investigation, planning, intervention, and review.
- Recommendation 2: Establishing National Multi-Agency Practice Standards for Child Protection.
- Recommendation 3: Strengthening the local Safeguarding Partners to ensure proper co-ordination and involvement of all agencies. (Education as a fourth partner)
- Recommendation 4: Changes to multi-agency inspection to better understand local performance and drive improvement.
- Recommendation 5: A new role for the Child Safeguarding Practice Review Panel in driving practice improvement in Safeguarding Partners.
- Recommendation 6: A sharper performance focus and better co-ordination of child protection policy in central Government.
- Recommendation 7: Using the potential of data to help professionals protect children.
- Recommendation 8: Specific practice improvements in relation to domestic abuse.

Reflections National Panel Review

Lots in common with Independent Review of Children's Social Care, that is helpful in terms of coordination and next steps



Recommending a cross departmental ministerial led group (early discussion started more to come)



The local, and to some extent the national, recommendations are in the majority framed through the lens/practice of social work. Policing needs to mitigate any risk that because of that the nuanced understanding that had policing been at the table in the right place in the first place these reviews might be saying more about the role of Policing.



The references to practice in terms of critical thinking, analysis, information sharing, child protection expertise and experience may require discussion with CoP about national training products and resources as well as those at local level at both single agency and cross agency level.

Reflections National Panel Review

- Helpfully draws a focus on getting the child protection part right, but expressed a strong view it is not intended to separate child protection from early help
- Nothing we don't recognise having gained insight across the partnership arrangements since implementation or see as controversial at this stage
- Dependent upon adoption of certain recommendations some uplift in investment is likely to be required. It may be suggested the money is already in the system and merely requires re-purposing to achieve the whole scale change described in both reviews. References to pooled budgets in Josh McAllister's review and other references to funding might bring new focus to this. The distinction about funding the local partnerships strategic infra-structure as oppose to operational child protection will be an important area to keep in mind.

A bit of detail National Panel Review

- **A national Child Protection Board**, accountable to a new Ministerial child protection oversight group, bringing together Ministers from DfE, HO, DHSC and DLUHC. We recommend this group is chaired by the DfE Minister for Children and Families, as the department with the largest policy responsibility for child protection. The Ministerial Group should appoint an independent chair for the Child Protection Board, directly accountable to them.
- Bringing together all relevant central Government departments, local Government, the police, education and health representatives and others. The Board will have three roles: To oversee performance in the child protection system, spotting emerging issues, ensuring the delivery of reforms, and acting as the escalation route for issues which need resolving at the national level. Core membership would be fixed, there should be scope to invite additional attendees for specific themes and issues.
- **Develop a set of national operational standards** for multi-agency child protection work; and CHILD PROTECTION IN ENGLAND 115
- **Oversee and ensure delivery of multi-agency child protection units** in all local authorities. (geographical footprints will be an issue but we can't ever change that so we probably just have to learn to work with it and work out how senior leaders come together across larger footprints as appropriate much as is being tried in some areas now)
- **MASH**; "The Multi-Agency Child Protection Unit model we are proposing shares similarities with some MASH models. We have heard about cases where successful authorities have extended the MASH model or aspects of it to deliver a multi-agency response across more of the child protection process. For example, in Hampshire children's services, strategy discussions take place in the MASH which has led to 'comprehensive information sharing'"

A bit of detail National Panel Review

- There should be a **bespoke leadership development programme** for Safeguarding Partners to help to really unlock the potential of joint and equal responsibility, with each partner grounded in their own professional background but also understanding how to work together to set shared values and ambition for all those working with vulnerable children in need of help and protection
- **Inspectorates should** draw up proposals for a more genuinely integrated and comprehensive model of multi-agency inspection, adequately resourced by all partners, and integrated into the ongoing work of each inspectorate. In the shorter term there is a gap in our national understanding of the current baseline effectiveness of multi-agency arrangements. Therefore, we recommend the inspectorates undertake an initial thematic review of multi-agency arrangements in a number of areas, looking not just at the front door but at the multi-agency response across the child protection journey. We note the current suspension of HM Inspectorate of Probation in Joint Targeted Area Inspections during 2022/23. We recommend that this is reviewed for future years as the role and contribution of the probation service to multi agency safeguarding arrangements is extremely important.

A bit of detail National Panel Review

- **A national peer support capability** for Safeguarding Partners is developed, overseen by the panel - working in partnership with all key stakeholders - so that it can aggregate and disseminate learning about effective practice, however, this work would necessarily and importantly be co led with all key stakeholders. This capability should be jointly funded by the Department for Education, Department for Health and Social Care and the Home Office. The peer support capacity would include the three national facilitators already working to support Safeguarding Partners, who would be joined by a wider team of subject matter experts, analysts and researchers from health and mental health, policing, education, and social care. We see the role of the Panel as responsible for identifying good practice and common challenges faced by Safeguarding Partners across the country, and facilitating peer to peer support between Safeguarding Partners. They would also coordinate problem solving on common issues. (Particular focus would be required to ensure the high level of engagement in Policing would be retained and we are not absorbed into an existing DfE/Ofsted regional improvement response to inadequate local authorities)
- Oversee the development of meaningful and **incisive data collection**. The Secretary of State urgently convenes a task and finish group of high-profile data and technological experts from a range of sectors, and chaired by a child protection expert, to answer the question: 'How can we transform our use of data to better protect children? The group should report back to the Secretary of State by the end of the year on its findings including the scale, pace and nature of change required.

A bit of detail National Panel Review

- **Domestic Abuse;** in line with recommendations 1, 2, and 3 we are calling for specific changes in relation to the way domestic abuse is approached in multi-agency safeguarding arrangements:
- Safeguarding Partners to improve how they work with specialist domestic abuse services by establishing stronger working relationships and clear information sharing protocols.
- Safeguarding Partners must be committed to, and fully invested in, the commissioning of DA services and ensure all staff have a robust understanding of what the DA support offer is in their area.
- Appropriate responses to domestic abuse should feature clearly in the new National Child Protection Practice Framework and training should be embedded across all Safeguarding Partners for all practitioners to ensure they provide a domestic abuse informed.

Reflections Child Q Local Child Safeguarding Practice Review

As a relevant agency how is the crucial insight about the daily lives of children and practitioners in the early years and education settings informing your cross agency strategic planning

Are you using the DfE's Marshall teams insight to inform your work (attach PP)

Do you consider the role of Police in schools locally (Attach the evaluation)

Have you considered the quality of this report, it's focus on the practice, might it help you commission and set terms of reference in your area